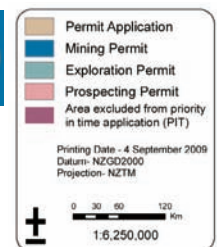
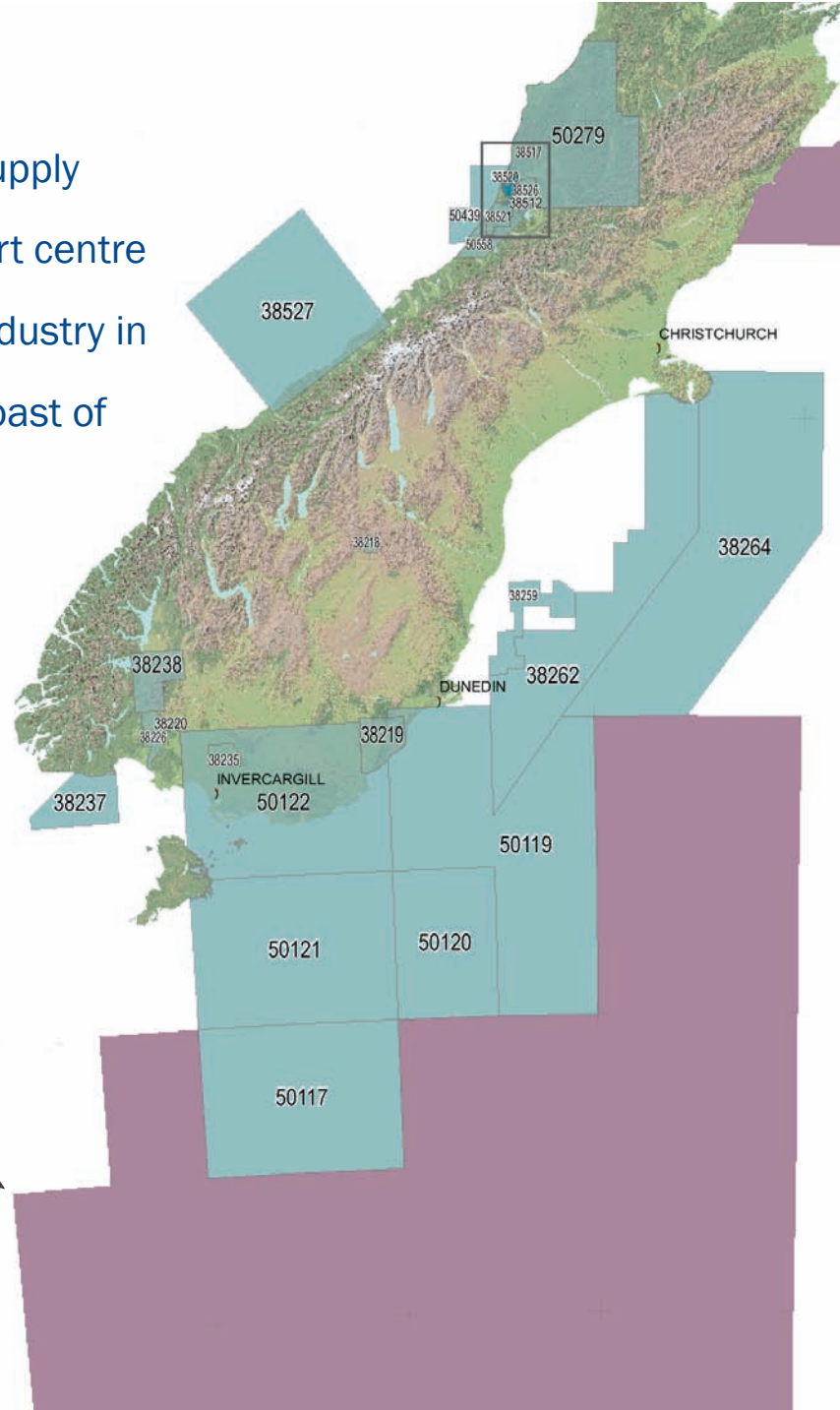


Dunedin

Your Southern Supply Base



Dunedin is the leading site for a supply base, logistics provider and support centre for the offshore and onshore oil industry in the Great South Basin and East Coast of the South Island of New Zealand.

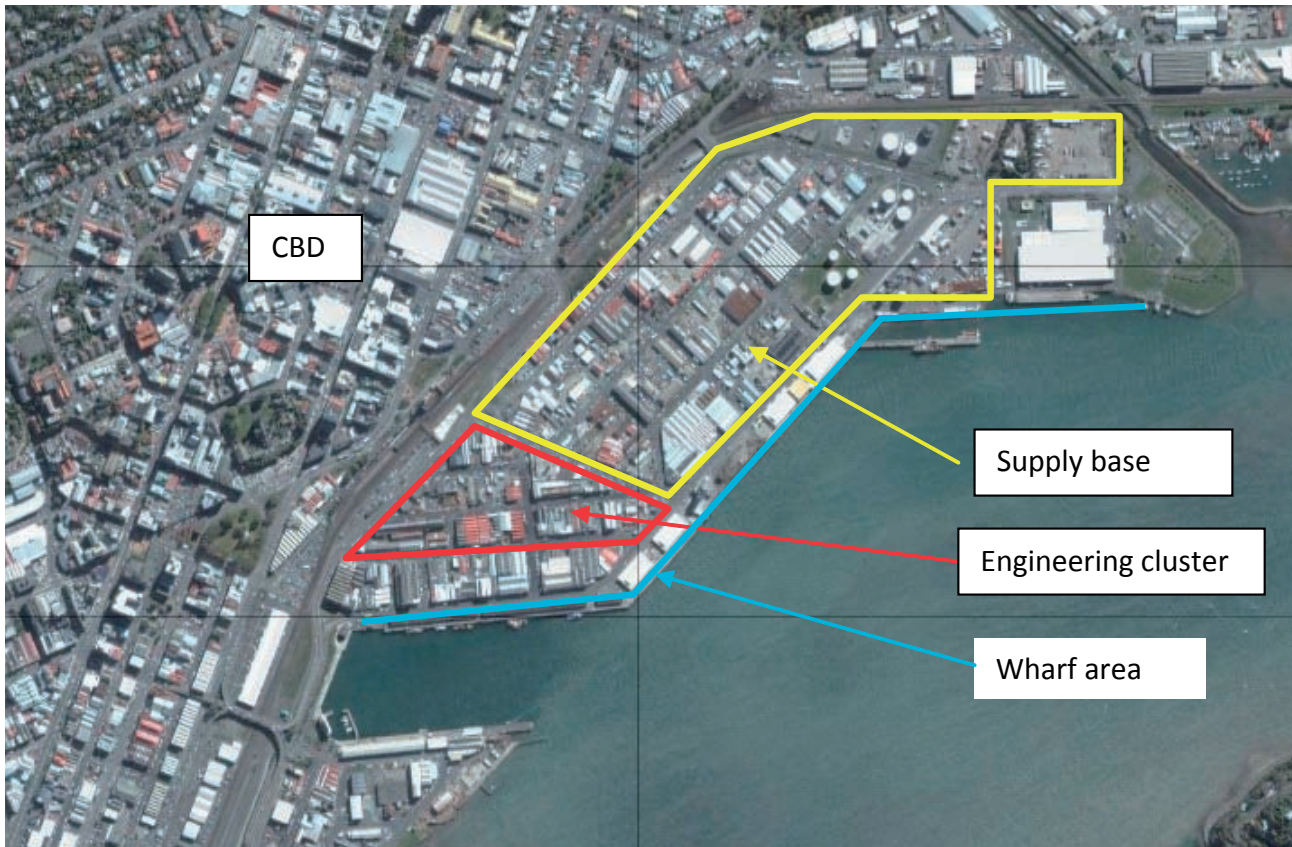


Dunedin – Supply Base

The Dunedin supply base is situated at the head of the deep and sheltered Otago Harbour. At present, laydown areas, wharf space and bunkering facilities already exist. Provedoring, marine repair and servicing facilities are also currently available.

Looking to the future, the Dunedin City Council and Port Otago own a significant amount of land in this area and have identified it for redevelopment with provisions already in place to allow for this. Planning is underway for the construction of an International Logistics Hub and Offshore Supply Base to support the oil industry in the southern part of New Zealand. This would allow for easy development into a major industrial cluster and logistics centre.





Key Features:

A land area of more than 200,000m²

It is fully serviced for all utilities

24 hours a day, seven days a week operation is a permitted activity

Commercial shipping of up to 8.0 metres draft and 32.2 metres beam catered for at the Dunedin wharf system (13 metre draft at Port Chalmers)

Provision for an intermodal hub

Handling equipment available 24 hours a day, seven days a week

Site adjacent to both the main trunk railway line and State Highway One

Sophisticated engineering and production services, casting, fabrication, machining and marine maintenance organisations are situated on the edge of this site

25 km from Dunedin International Airport

10 km from the associated deep water Port Chalmers Container Terminal

Within the proposed area there is provision for a tank farm

Commercial terminal and Stevedore services

Provision for bulk cargo, warehousing and storage facilities

Administrative and service buildings are a permitted activity within the proposed supply base area

The city centre is only a block from the supply base

The University of Otago is nearby

Nearby tertiary level Dunedin Hospital has full 24 hours a day, seven days a week medical services available

Port Otago

Port Otago is the primary export port for the South Island of New Zealand and operates two wharf systems – Port Chalmers and Dunedin. It is located on the beautiful Otago Harbour - world-renowned for its abundant sea and birdlife.

Otago Harbour Information

The entrance to Otago Harbour is situated in the bay between Heyward Point and Taiaroa Head. The pilot boarding position is one mile north of the Fairway Beacon. Safe anchorage is available in close proximity, with Taiaroa Head lighthouse bearing 160° (T) and Heyward light tower bearing 220°(T).

Within the entrance, the harbour extends 9.6 kilometres to Port Chalmers and then carries on a further 12 kilometres to the Port (and City) of Dunedin.

The harbour channel is dredged to accommodate vessels with a draft of 12.5 metres, from Taiaroa Head to Port Chalmers, where the container facilities are located. From Port Chalmers to Dunedin the channel is dredged to handle vessels with a draft of 8.0 metres.





Port Chalmers Container Facility

The surge free, deepwater port handles the largest container vessels that call at New Zealand’s ports. Twenty-four hour service by experienced staff ensures rapid turnaround of vessels and cargo.

The facility covers:

- 15 hectares of heavy-duty paved area
- Capacity to store over 4,000 containers
- Wash pad for 72 containers
- Highest number of reefer points available in any New Zealand port (1,350)
- Sophisticated Container Management System

Equipment Package

Port Otago is a three-crane port, giving the capacity to work two ships simultaneously.

| | ZPMC Gantry Cranes | Vickers Paceco Gantry Crane |
|--------------------------------|--------------------|-----------------------------|
| Lifting Capacity | 60 Tonnes | 46 Tonnes |
| Lift Height (above Crane Rail) | 35 m | 31.6m |
| Outreach from fender | 44m | 32.38m |

Port Otago is equipped with:

- 14 straddle carriers
(50 Tonne lift capacity, 20’ & 40’ containers, twinlifts)
- Empty Container handlers
- Forklifts

Container Depots

Port Otago offers both on-wharf and off-wharf container depots. Capacity to process 200 containers (wash/PTI) per day
Full access to:

- Customs
- Quarantine
- Ministry of Agriculture and Forestry facilities

Port Security

Maritime New Zealand has certified Port Otago Limited as being compliant with all international security requirements.

Berth Facilities and Marine Services

Port Chalmers has four berths, suitable for handling containerised, multipurpose, conventional, cruise or RoRo vessels. Berthing flexibility is guaranteed by a swinging basin dredged to 13 metres, with a turning diameter of 700 metres.

| Berth | Length | Draught |
|-----------------------|-----------------|---------|
| Container (No. 1) | 300m | 12.5m |
| Multi-purpose (No. 2) | 296m | 12.5m |
| Beach Street (Inner) | 412m (combined) | 11.6m |
| Beach Street (Outer) | 412m (combined) | 11.6m |

Kitchener/Birch Street Slipway

This slipway is capable of handling vessels of 500t displacement and is mainly used by fishing trawlers and tourist launches.

Marine Services

| |
|---|
| Responsible for pilotage and towage |
| Operate 24 hours a day, 365 days a year |
| Experienced pilots ensure all vessels arrive and depart on time, whilst observing the highest safety standards |
| Port Otago operates three tugs – one with a bollard pull of 58 tonnes and two with a bollard pull of 28 tonnes each |

Dunedin

Tankers, fishing vessels and smaller conventional vessels are the principal users of the Dunedin wharves. The channel between Port Chalmers and Dunedin is capable of handling vessels of up to 8.0 metres draft and 32.2 metres beam.

The Dunedin wharves are within metres of substantial lay down areas. They are also adjacent to the cold storage industry established to service the meat, dairy, fishing and horticultural exports of the region.

Cold Storage

Wharfside coldstore facilities available - these operate 24 hours a day, seven days a week.

Bunker Facilities

| |
|--|
| Fixed Bunker facilities available at Dunedin (Oil Wharf or X/Y Berth) |
| Oil Wharf - Gas Oil, MDO, LFO and Fuel Oil |
| X/Y Berth - MDO and LFO |
| The Oil Wharf can accept vessels up to 190 m LOA |
| The manifold position on the wharf is 100 metres from the outer end of berth |
| The minimum depth alongside the berth and wharf is 8.3 metres and safe draft is 8.0 metres |
| The bunker point on X/Y berth is positioned 60 metres from the North end of the berth |

Warehousing

30,000m² dairy export quality, covered warehousing at Port Chalmers and 6,000m² at Dunedin, directly adjacent to berths:

| |
|---|
| Receiving of cargo for unitising or packaging |
| Excellent road and rail access to the warehouses |
| An all-weather environmental loadout bay for both road and rail receiving |
| Container vanning for all types of export products |
| Computerised inventory management systems |
| Palletising, labelling and other services |

South Freight

South Freight, Port Otago's wholly-owned trucking division, can provide a competitive transport, storage and distribution solution for exporters and importers. South Freight is based at the company's off-wharf container depot and its services include:

| |
|---|
| Container storage, handling and distribution |
| LCL packing and unpacking |
| Receipting and packing of break bulk cargo |
| Container repair, PTI |
| Forklift hire |
| Customs Bond Store and MAF/MOF approved areas |



Air Facilities

Dunedin International Airport is located 25 kilometres south of the city centre. Regular direct international flights connect Dunedin and Australia. The airport is serviced by direct daily flights to New Zealand's main cities by two airlines.

As part of the airport's continued upgrade a new world class terminal facility was opened in 2006 to cater for international arrivals and departures and associated security levels.

This new terminal separates both domestic and international passengers within the one terminal and provides for onsite customs and bio - security services which are available 24 hours a day, seven days a week.

Numerous connecting passenger flights to all major New Zealand destinations are available from Dunedin on a regular basis. Daily early morning flights arrive into Dunedin from New Zealand's other main centres

The airport currently handles fully laden jet aircraft and the airport apron is being progressively upgraded to cater for higher static loads.

Full fire and rescue services are provided at all times.

The airport is fully equipped with precision instrument approach equipment (ILS)

To cater for future expansion the Dunedin International Airport has established a 300 hectare airport zone that permits multipurpose activities. In addition to this



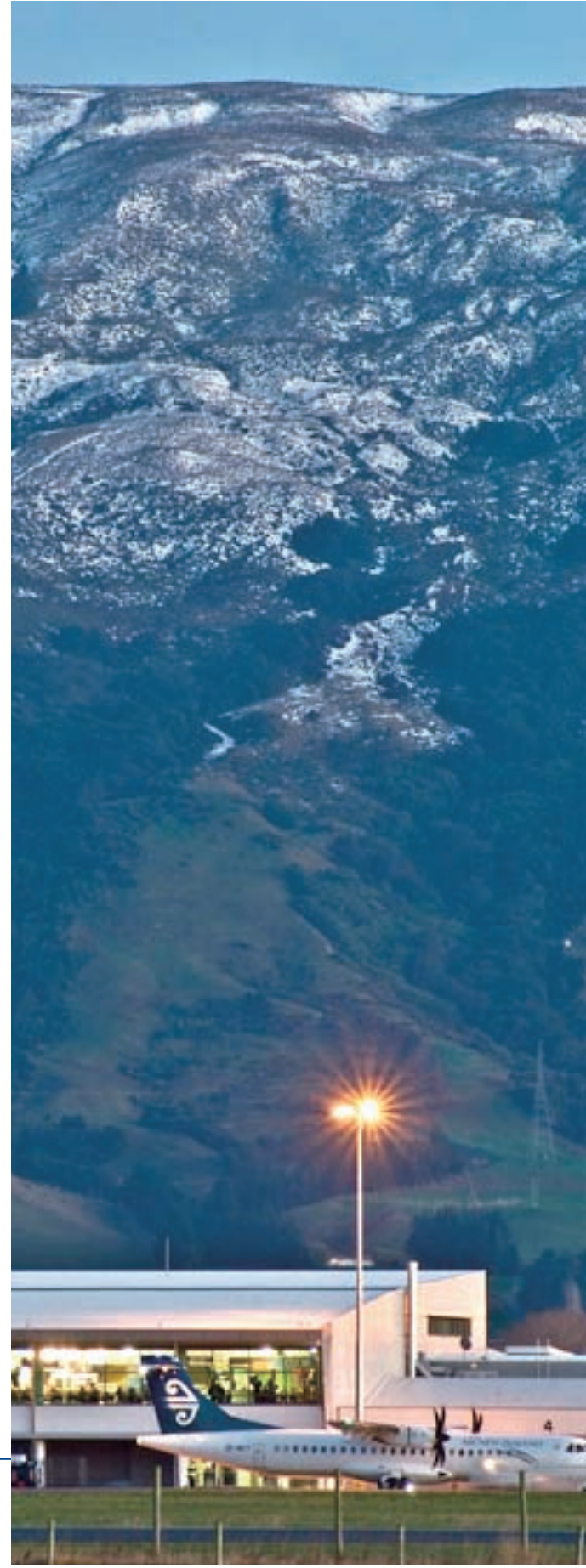
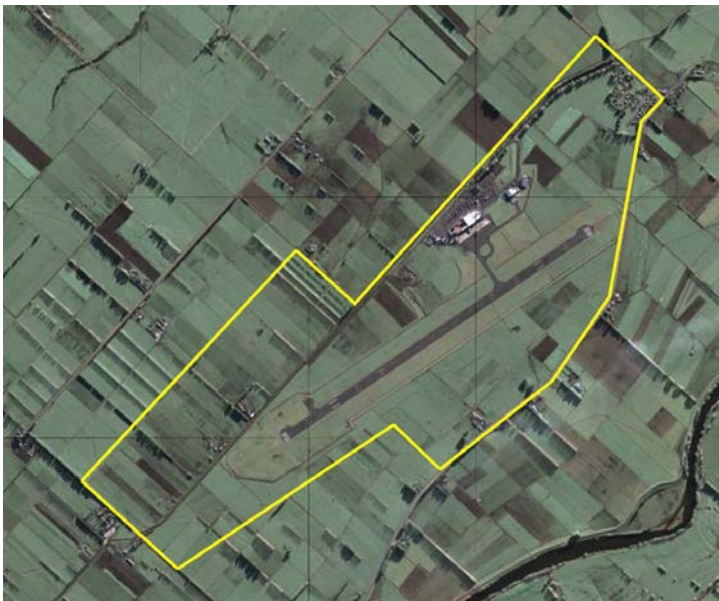
the airport has a designated noise boundary that prevents the development of noise sensitive activities within a specified area. This permits unrestricted 24 hour operation of the airport.

The planning and environment/provisions are already in place to allow for additional development and expansion of both the aircraft facilities and any associated infrastructure to meet the service and support requirements of an offshore oil industry. New hanger facilities and warehousing can be accommodated within this zone.

Space also exists to build an adjoining separate heliport within the terminal zone to allow for separate, yet adjoining, facilities if and when required.

Fixed and rotary wing aircraft repair and maintenance facilities already exist within the Dunedin area to support such an industry

When it comes to location, Dunedin International Airport is in close proximity to both the Canterbury and Great South Basins. The airport has handled offshore operations during the recent seismic testing phase and for previous explorations off the Otago coast.





Engineering

Dunedin has an extensive engineering base ranging from consulting engineers through to Engineering Dunedin Incorporated, which encompasses the mechanical engineering cluster. Many of these organisations are centered within the proposed supply base area. Companies have, in the past, been associated with work for the offshore oil and gas industry and have worked as subcontractors on ships for the Royal New Zealand Navy.

Within the cluster there is a strong presence in the following fields:

Automation

Robotics together with software and precision engineering are a specialty of Dunedin and this expertise can be fine tuned for a variety of applications.



Automated production robot



A specialised milling machine carefully surfacing a solid bronze propeller

Heavy Engineering

Dunedin has several Heavy Engineering companies who provide engineering services for shipping, wind turbines, large access cranes and heavy earth equipment, rail wagons and other heavy equipment. Each company has large open workshops with high lift capacity. They have specialised equipment that can cut, fold and roll heavy gauge steel sheets into the shapes required.

Marine Engineering

Dunedin based engineers have a long history and reputation in the design and manufacturing of marine equipment and carrying out shipbuilding and repairs.



New engine for oil supply ship



800t Trawler on the slip for maintenance

Fabrication and Casting

Fabrication facilities range from heavy plate rolling through to the assembly of light metal structures. The fabrication buildings include heavy lift capabilities suited to the fabrication of large structures. Both ferrous and non ferrous casting is undertaken in Dunedin. Some specialist engineers focus on the production of ducting and ventilation systems. Plumbers, Electrical Engineers, Plastic Engineers, Toolmakers, Design Engineers and CAD/Drafts people complement the skills of this sector.



Conveyor



Specialist casting

Tool and Die Making

Historically this is one of Dunedin's strengths. Fine blanking through to the production of jigs and fixtures can all be done in Dunedin. A variety of modern machines using the latest technology can be found here.

Process Engineering

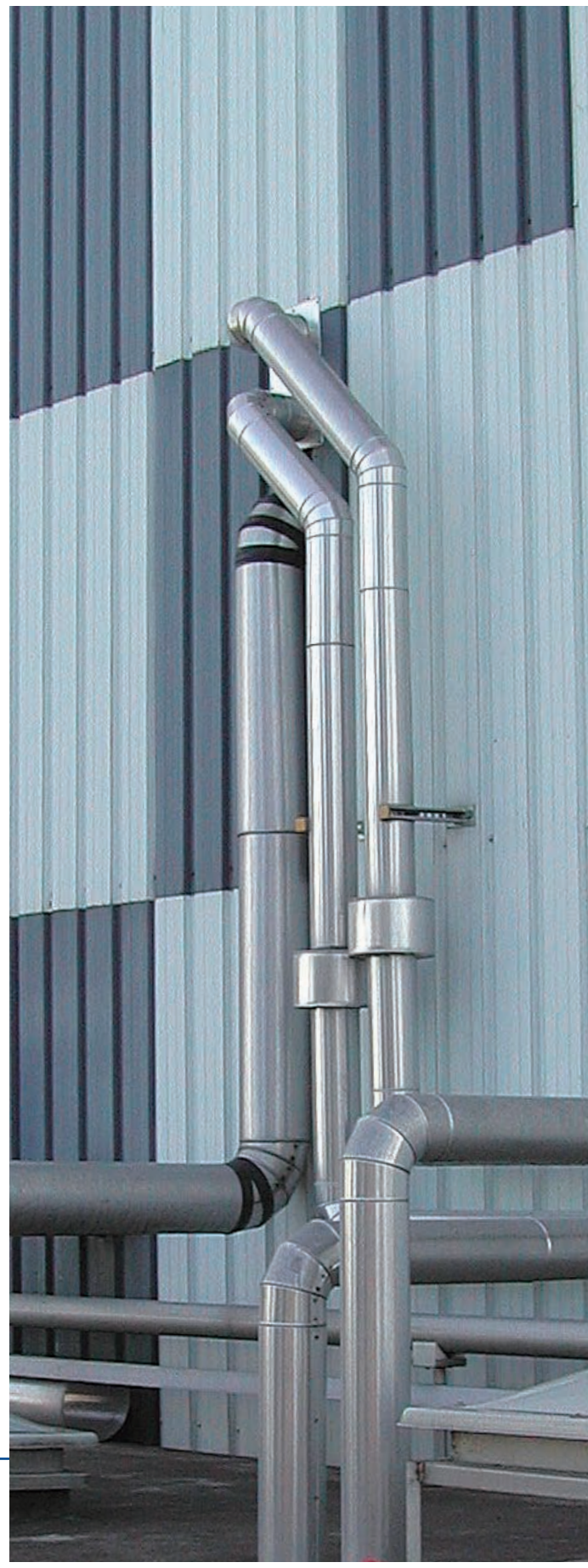
In Dunedin various engineering companies develop processing equipment for major national and international manufacturers. Facilities exist for highly customised products from fully automatic component machining through to processing equipment. Systems development is also carried out to accompany more specialised plant.

Machining

An integral part of the engineering sector is the broad range of machining skills and CNC machines that exist, from automated production of small components to large one-offs with very demanding tolerances for the hydro power industry. Machines include CNC Lathes, Machining Centres, horizontal and vertical borers, E.D.M. machines, metal spraying and cylindrical and surface grinding. This sector currently offers a 24 hour, seven days a week service.



Kia Horizontal Borer and Machining Centre





Dunedin City and Supporting Services

The vibrant and attractive City of Dunedin stands on the hills and valleys surrounding the head of Otago Harbour. The city is the South Island's second largest and is a supply and service centre for the lower South Island. Dunedin's climate is temperate.

The planned supply base is situated between the harbour and the Central Business District.



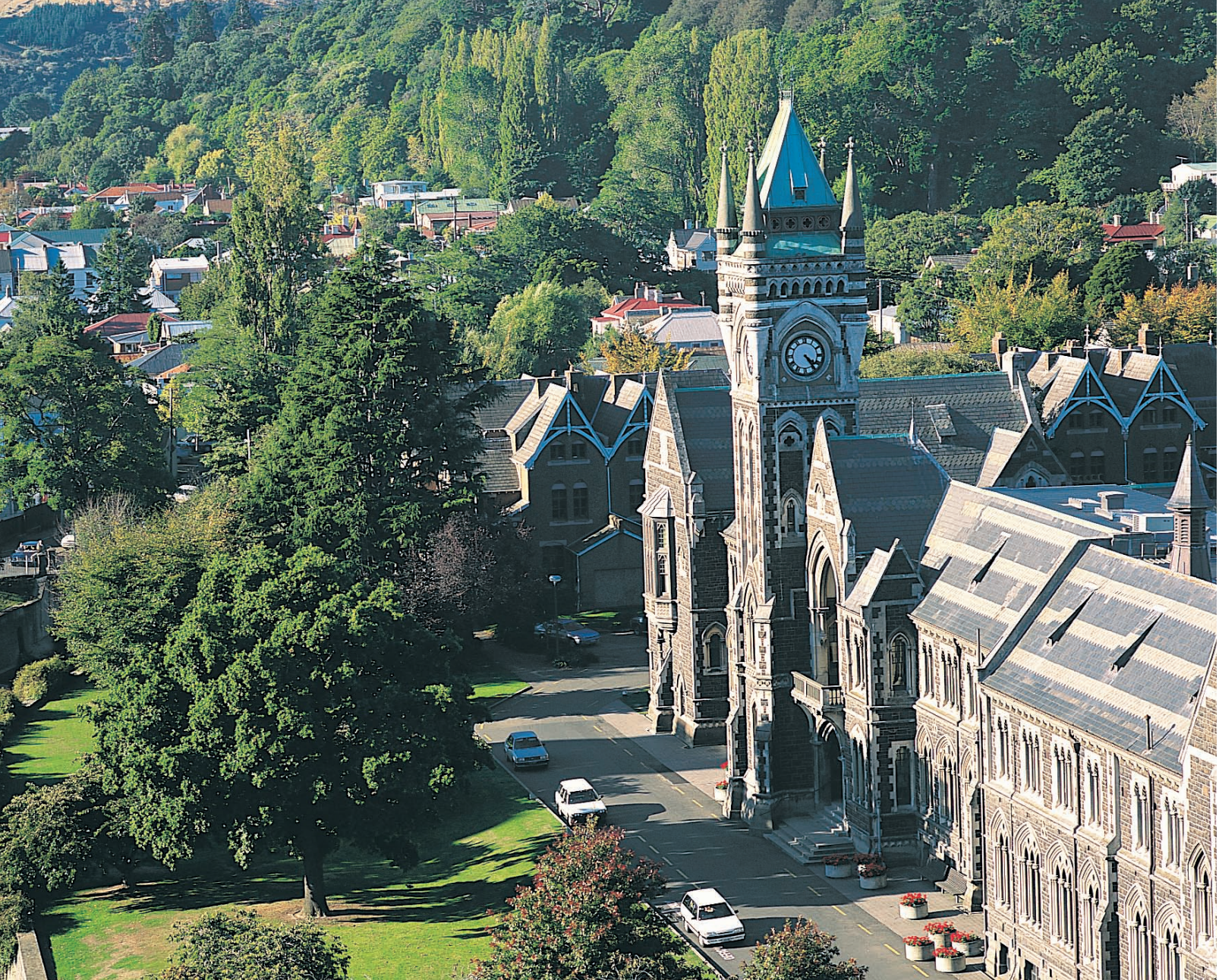


Photo Credit: Bill Nichol

University of Otago

The University of Otago makes a significant contribution to the city and is New Zealand's top ranked university in terms of research. This city's thriving tertiary student population has led to a vibrant youth culture. Various parts of the University are involved in areas of interest related to oil and gas exploration and development. The Department of Geology is a prime example of this with the Southern Basin's Research Initiative being a project to examine features within the upper 500 m of the seafloor.



Photo Credit: Bill Nichol

Medical City

Dunedin Hospital is a tertiary teaching hospital and the associated Otago Medical School (one of only two in New Zealand) is a centre for excellence. It is also the base hospital for the lower South Island.

It provides:

Comprehensive tertiary hospital services around the clock

National Poisons Centre (based in Dunedin)

Full emergency trauma response team

Chemical emergency capability

Well-prepared for industrial health & safety

Full helipad and rescue facilities at Dunedin Hospital



Sophisticated City

- Vibrant café, restaurant & bar scene
- Casino, Night Clubs, Ancillary Services
- Quality galleries & museums
- Creative fashion powerhouse of NZ
- Compact, unique downtown shopping
- Live theatre, orchestra

Business City

- The commercial hub of the lower South Island
- High quality Hotels
- Food and service providers
- A well skilled and educated workforce
- Advanced IT and development software expertise
- Competitive commercial and property costs

Lifestyle City

- Temperate climate
- High quality housing and rental market minutes from the city centre
- Excellent schools including both state and private integrated schools with boarding facilities
- Gateway to Central Otago
 - the Pinot Noir & adventure capital of NZ
- Top quality recreational facilities
- World class golf courses within the city limits
- Diverse Shopping
- The city is well served by its many sporting facilities both in-door and out-door with facilities such as the Olympic sized Moana Pool, International sized Ice stadium, and the Multi purpose Edgar Sports Centre
- New roofed sports stadium due for completion 2011

Wild City

- Otago Peninsula at your doorstep abounds with natural wildlife
- Beautiful, easily accessible beaches
- All this adjacent to busy Port on Otago Harbour
- Vast rural hinterland 10 mins away
- Mountain biking, tramping, climbing
- Excellent fishing and boating

Education City

University of Otago ranked No.1 in NZ for research – strong in Health Science, Earth Science and Marine Surveying.
Extensive research capability

Otago Polytechnic - Strengths in innovation, engineering & design and a certified training provider

Facts on Dunedin

| | |
|----------------|--|
| Location | |
| Geographic: | Latitude 46° South, Longitude 170° East |
| Region: | Otago - Dunedin City is the financial and commercial hub East Coast, South Island, New Zealand |
| Dunedin City | |
| Area: | 3,350 square km (335,000 hectares) Largest City landmass in New Zealand |
| Population: | 122,000, including tertiary student population of 25,000 |
| Ethnicity: | Multicultural, predominantly European, Maori, Asian, Pacific. International student population comprises 70 countries including Japan, China and USA. |
| Main Language: | English |
| Climate | |
| Temperature: | Summer (December to March) mid 10°C to mid 20°C Autumn (April to May) 8°C to 16°C Winter (June to August) 4°C to 10°C Spring (September to November) 8°C to 17°C |
| Sunshine | Longest summer daylight hours in New Zealand Summer (December to March) 06.00 to 21.30 Autumn (April to May) 07.15 to 18.00 Winter (June to August) 08.00 to 17.30 Spring (September to November) 06.30 to 20.15 |
| Rainfall: | Less than 800mm rainfall each year |
| Snowfall: | 3.6 snow days per year on average |



